

# How to make Pleating Jig : DIY Emergency Face Mask

This jig will pleat mask of sewn dimensions 8"x7"

Pattern of fabric dimensions 9"x8", described here:

<https://www.stcharleshealthcare.org/covid-19/hand-sewn-masks>

"I made this printable template to make the videos, referenced below, easier to follow. Thank you *bendphoto* for creating these amazing videos & to *Beth H.* for creating the assembled image referenced. Keep up the hard work everyone, hopefully this jig helps save you some time!" – M. Kreiger

Step 1: Print this template (in color, template is color coded for easy assembly)

**\*\*Make sure resizing or scaling settings are set to "ACTUAL SIZE" or 100% & that "fit to screen and other settings are NOT on, otherwise your template will be the wrong size**

Step 2: Cut dashed exterior lines for page 1 & 2.

Step 3: Glue/double sided tape to tape template to cereal box material (tracing can be done instead, but carefully label each piece before cutting & cut on dotted lines)

Step 4: Fold on lines for A & B (OR cut along lines & tape)

Step 5: Tape as instructed on the following image & <https://youtu.be/NeBvTcsSB0k>

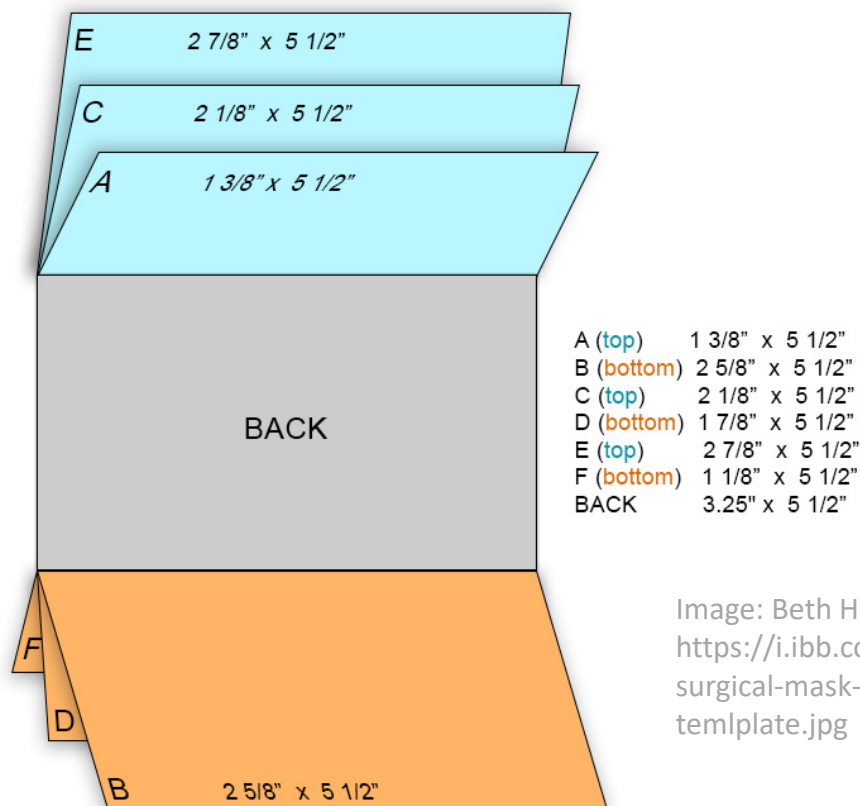


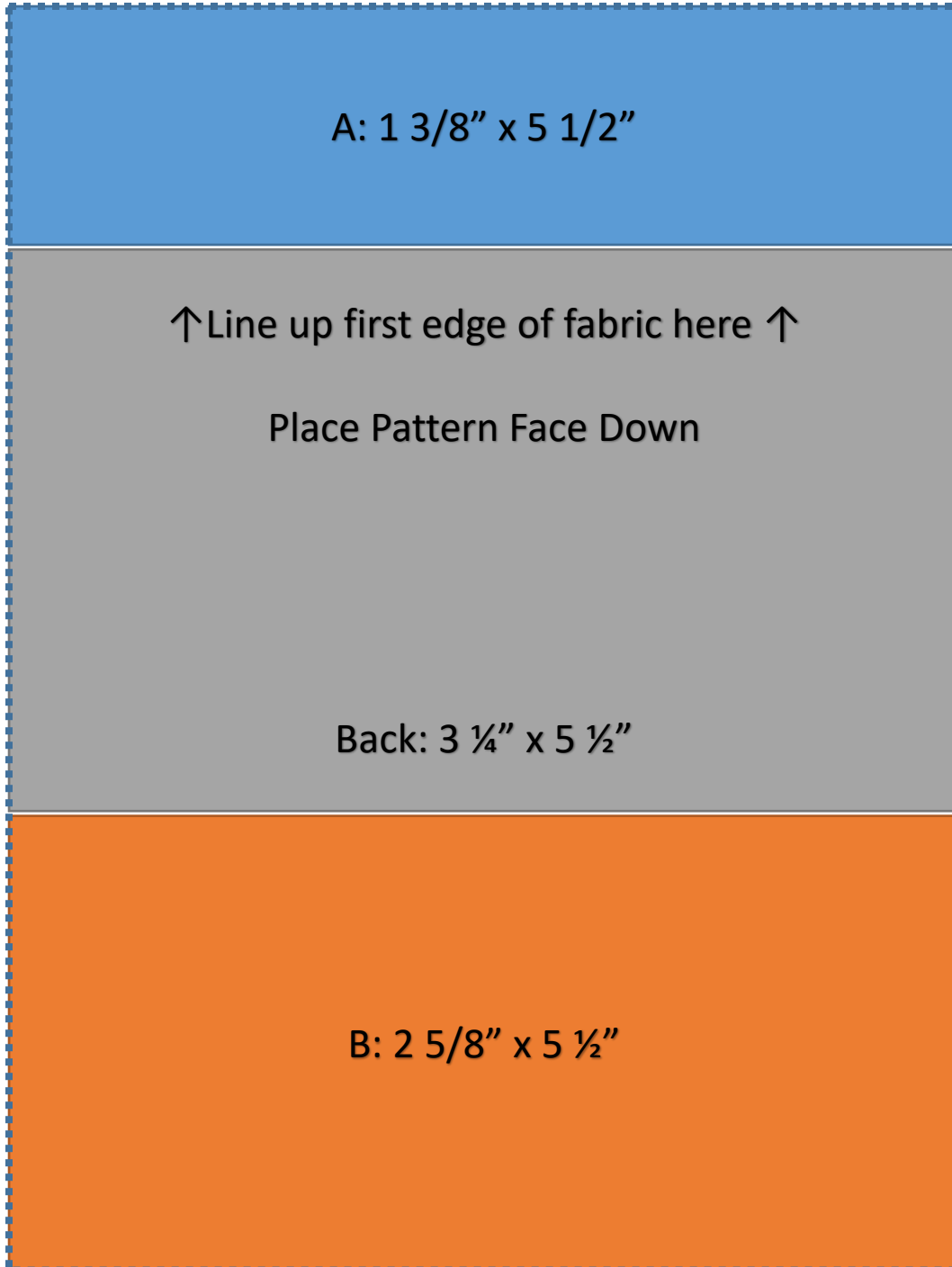
Image: Beth Hastings  
<https://i.ibb.co/s2mnnCP/surgical-mask-jig-template.jpg>

Step 6: You're ready to use this template! Use as per instructions at: Emergency Face Masks Pattern with Jig. St Charles Medical Center (SCMC) approved pattern. <https://youtu.be/L19YTzgEZ7I>

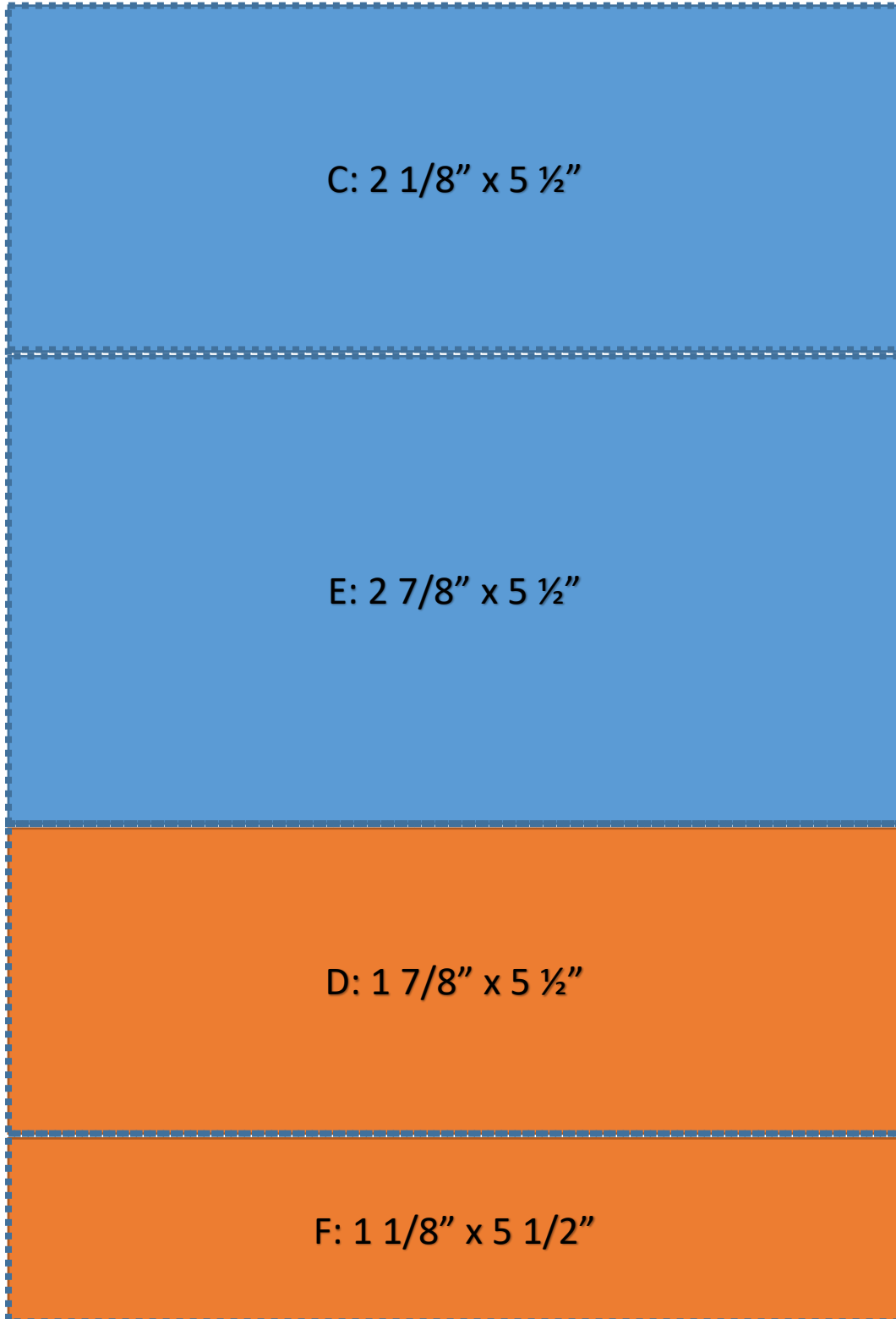
Similarly, a template for leaving the gap is at the end of this document.

For more information see: [www.appropedia.org/Tools for Fabric Mask Makers](http://www.appropedia.org/Tools_for_Fabric_Mask_Makers)

↓ Cut on dashed line around A, Back, & C ↓



↓ Cut on dashed line around C, E, D, & F ↓



Use as per instructions at:  
Emergency Face Masks Pattern with Jig. St Charles Medical  
Center (SCMC) approved pattern.

<https://youtu.be/L19YTzgeZ7I>

Cut on all dotted lines, transfer to cereal box, & cut out template

