



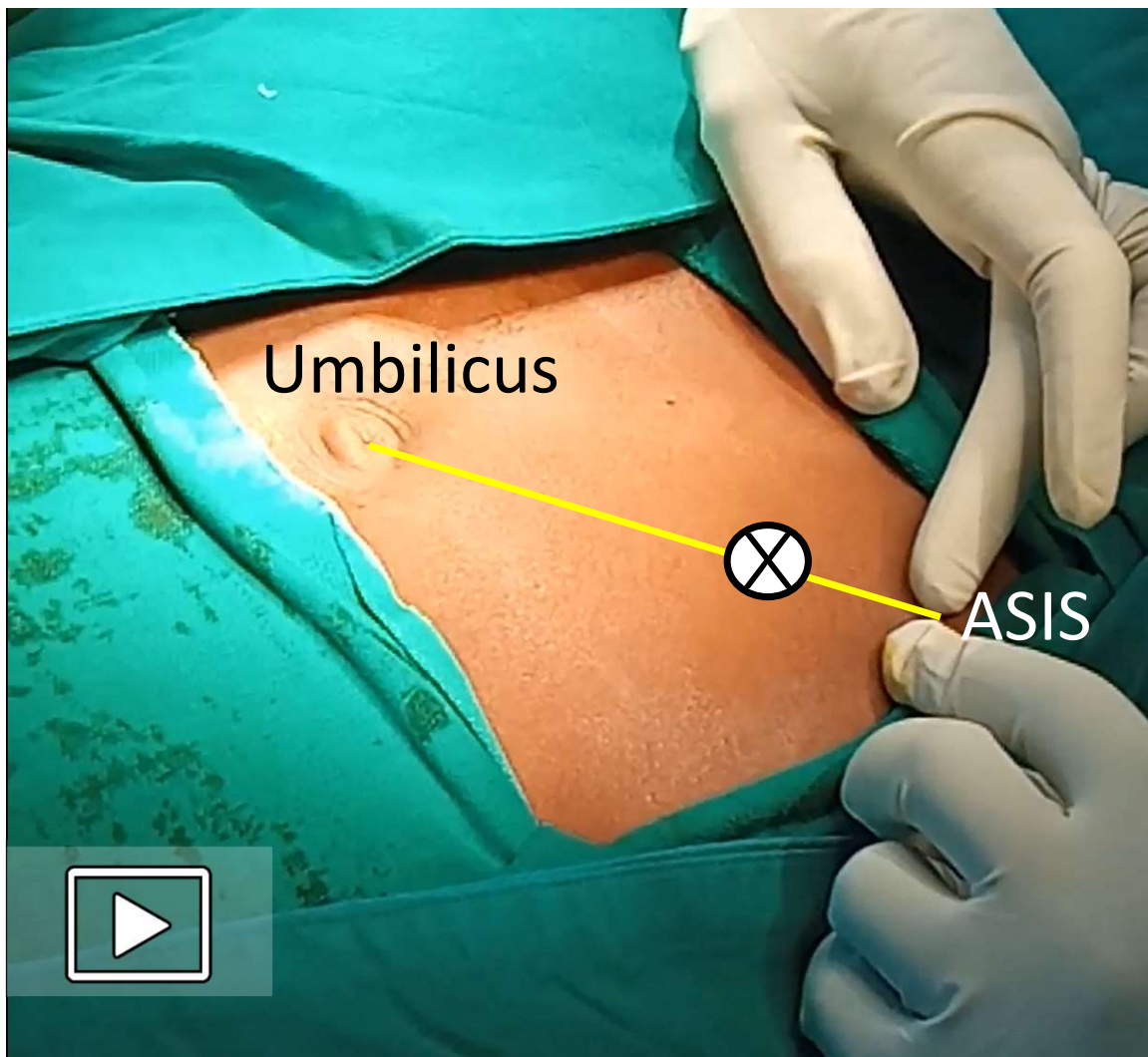
Safe Abdominal Entry

AMPATH Surgical App

2

Identify McBurney's Point

- A. Draw the line from the right anterior superior iliac spine (ASIS) to the umbilicus.
- B. Identify the point of max tenderness (or McBurney's point).



1

Skin Incision

Using a scalpel make a 4-6 cm incision along lines of Langer that is bisected by the point of interest.



3

Soft Tissue Dissection

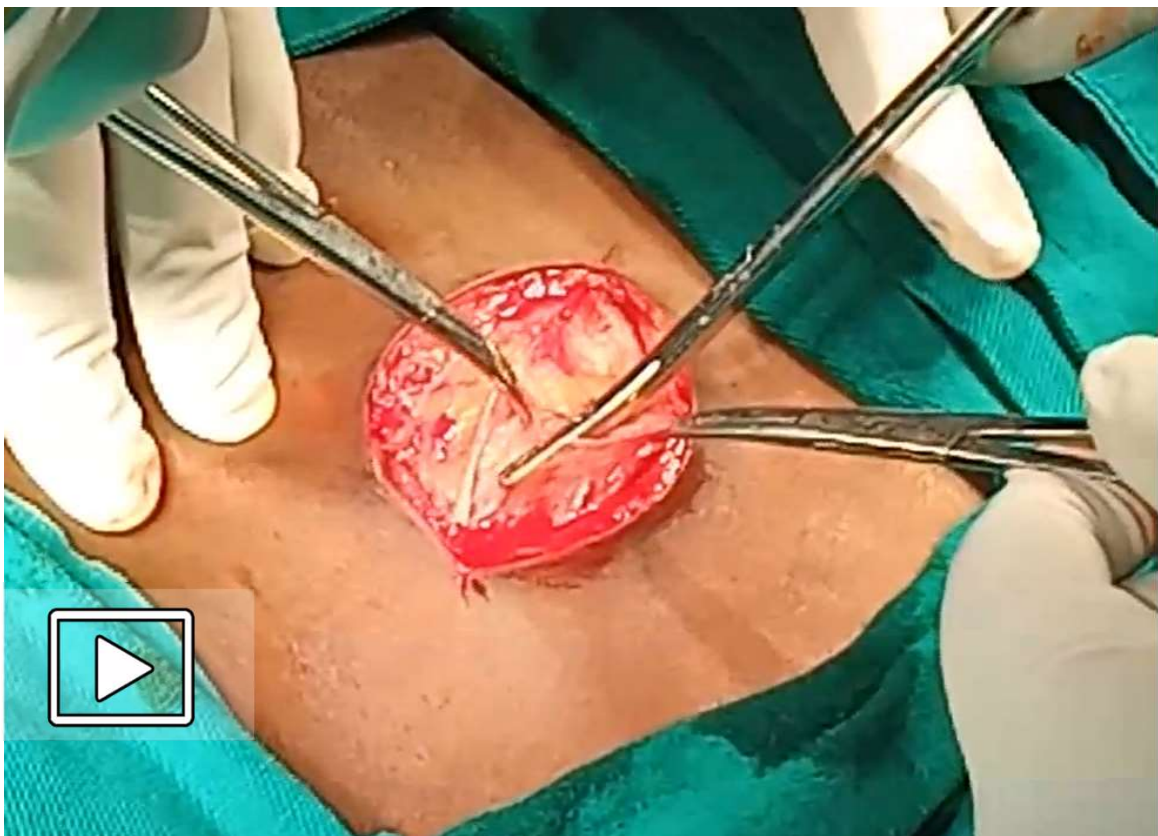
Use sharp dissection with diathermy. There will be two layers including a fatty layer and then a membranous layer (Scarpa's). There may also be a small layer of fat below the membranous layer.



4

Aponeurosis Layer

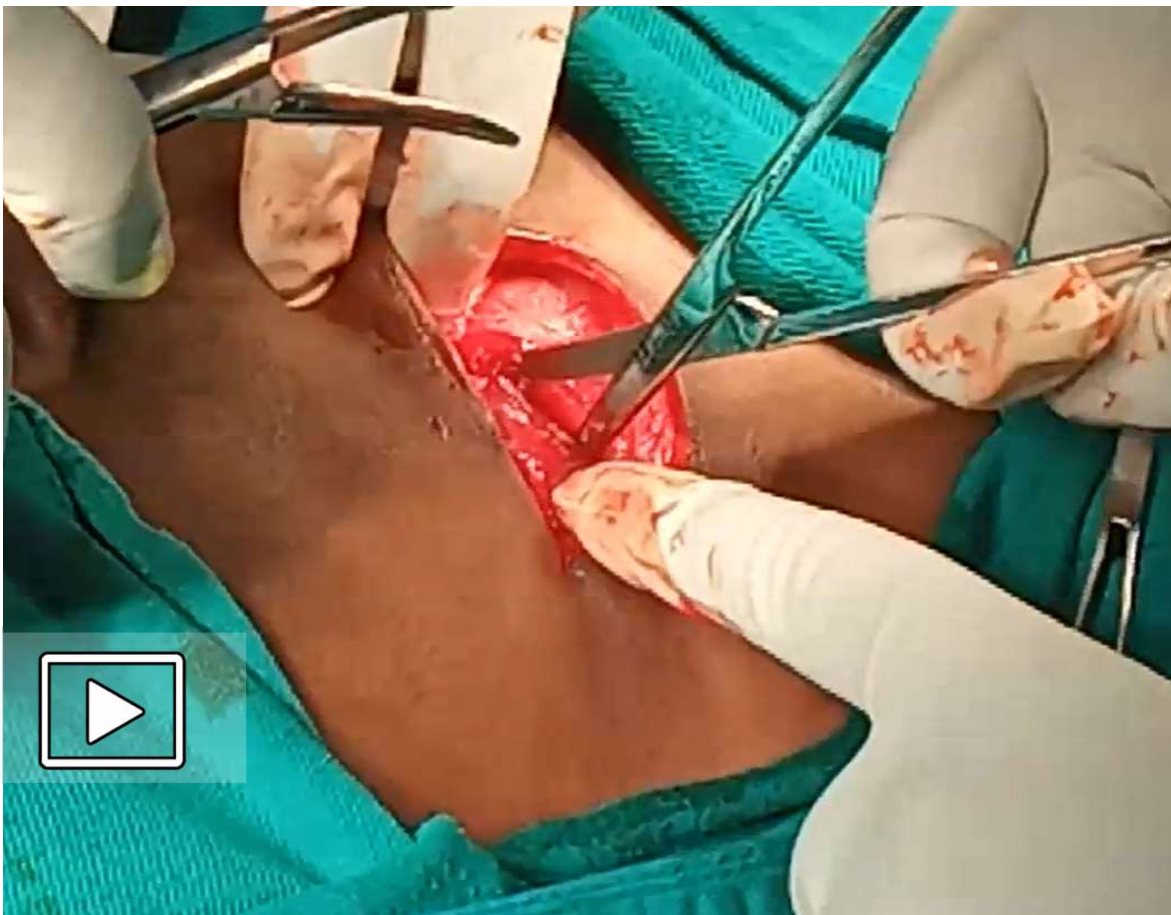
Grasp the external oblique aponeurosis with a haemostat and incise with Metzenbaum scissors. The fibers point medially to inferiorly.



5

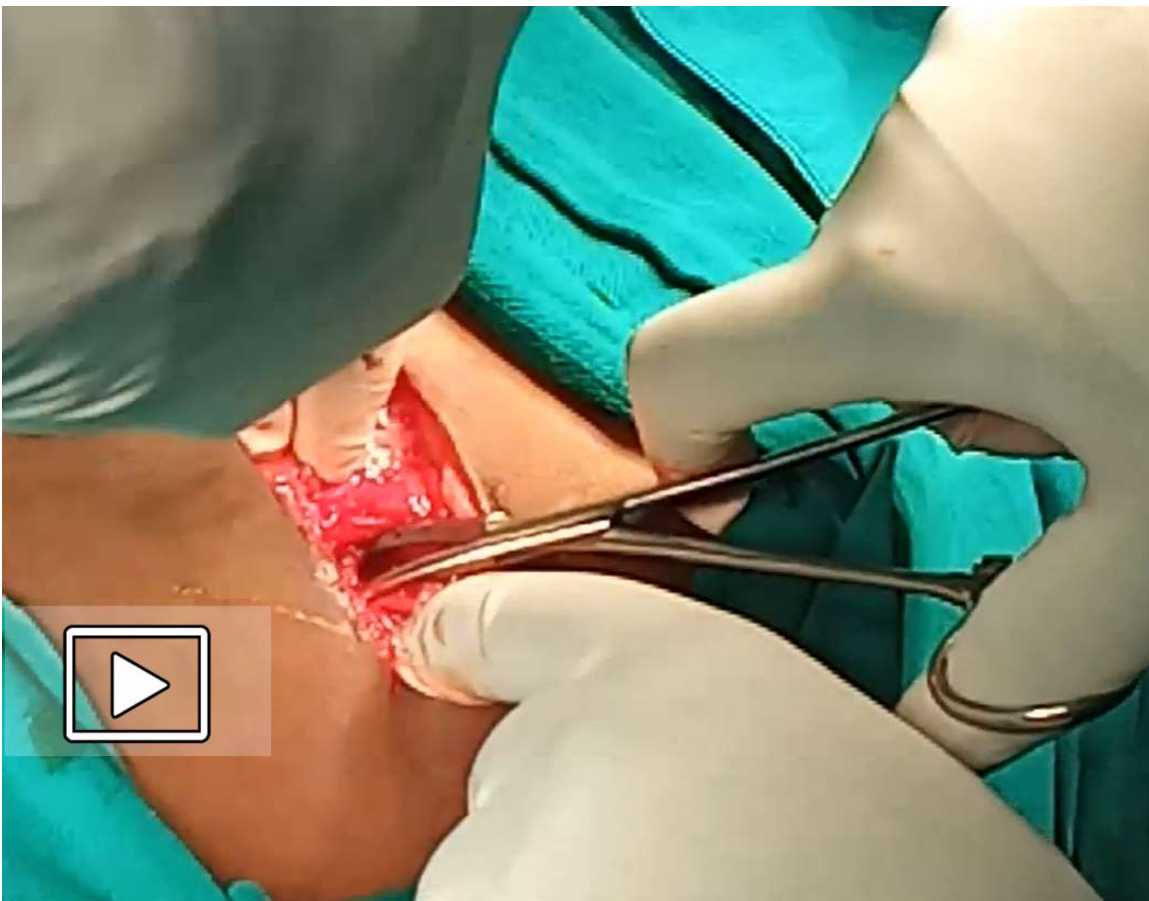
Muscle Dissection

The first layer of the muscle to be dissected is the **external oblique**. Its fibers run parallel to the incision. To dissect through the muscle, you will put a haemostat into the muscle and bluntly spread it along the pattern of the muscle fibers to create an opening wide enough to fit two army-navy retractors. You will then place the retractors into the opening and pull to continue to spread the opening along the length of the muscle.



Muscle Dissection Continued

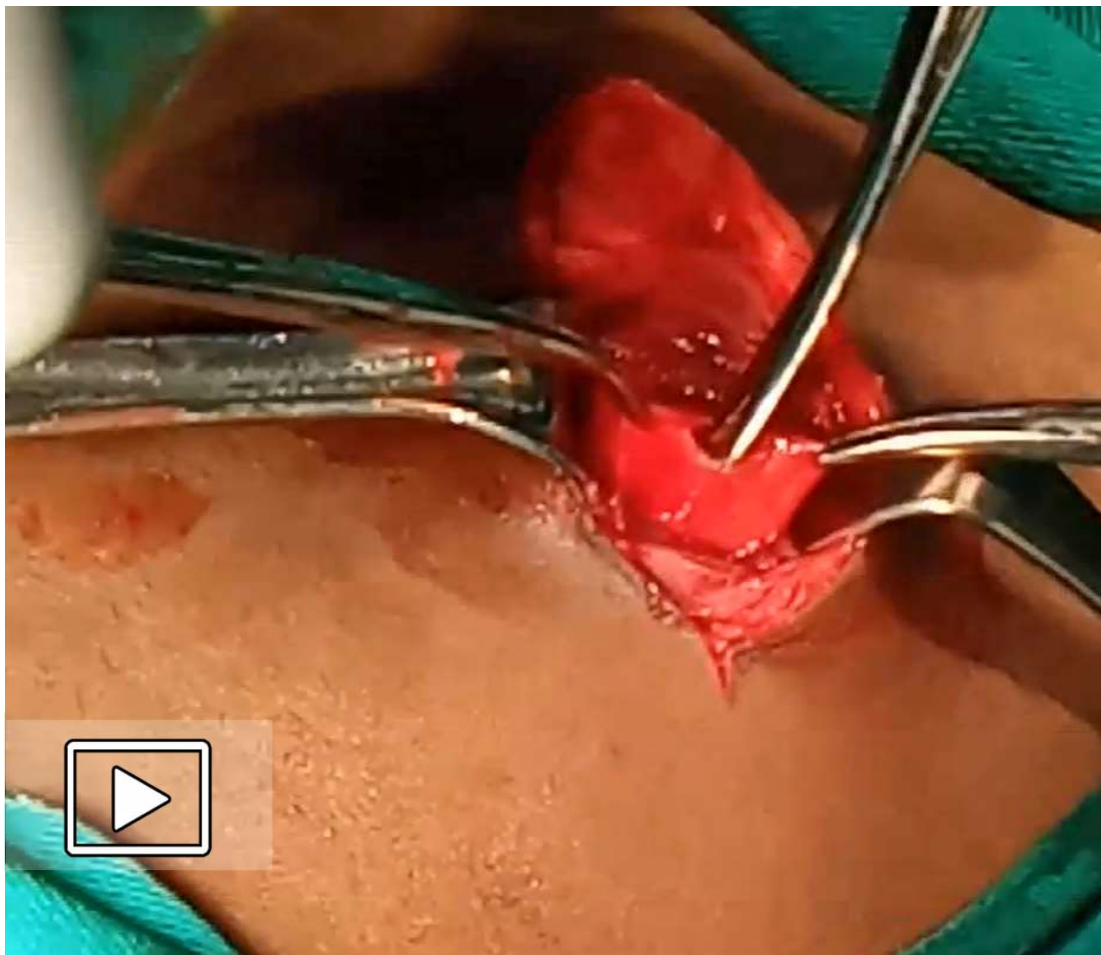
The second layer of the muscle to be dissected is the **internal oblique**. Its fibers point medially and superiorly, or perpendicular to the incision toward the left shoulder. put a haemostat into the muscle and bluntly spread it along the pattern of the muscle fibers to create an opening wide enough to fit two army-navy retractors. You will then place the retractors into the opening and pull to continue to spread the opening along the length of the muscle.



7

Peritoneum

The last layer you will encounter before entering the abdominal cavity is the peritoneum. You will grasp the edge of the peritoneum with a haemostat and elevate it and place a second haemostat 5 mm away from the original. Then palpate the elevated peritoneum to ensure there is no bowel or omentum within the contents and then sharply incise it.



Cognitive Task



What do you do if you encounter some purulent fluid upon entering the abdomen?



- A. You don't need to do anything
- B. Suction the fluid only
- C. Aspirate the fluid and send it for culture
- D. Dissect out any tissues touching the fluid.

Cognitive Task



The Correct answer is C,
aspirate the fluid and send for
culture.

- Serous fluid - suction
- Murky fluid – obtain culture
- Purulent fluid – obtain culture
- Abscess – gently attempt to bluntly dissect away from the anterior and lateral abdominal walls, obtain culture if purulent
- Omentum – gently attempt to bluntly dissect away from the anterior and lateral abdominal wall

for culture

D. Dissect out any tissues touching the fluid.