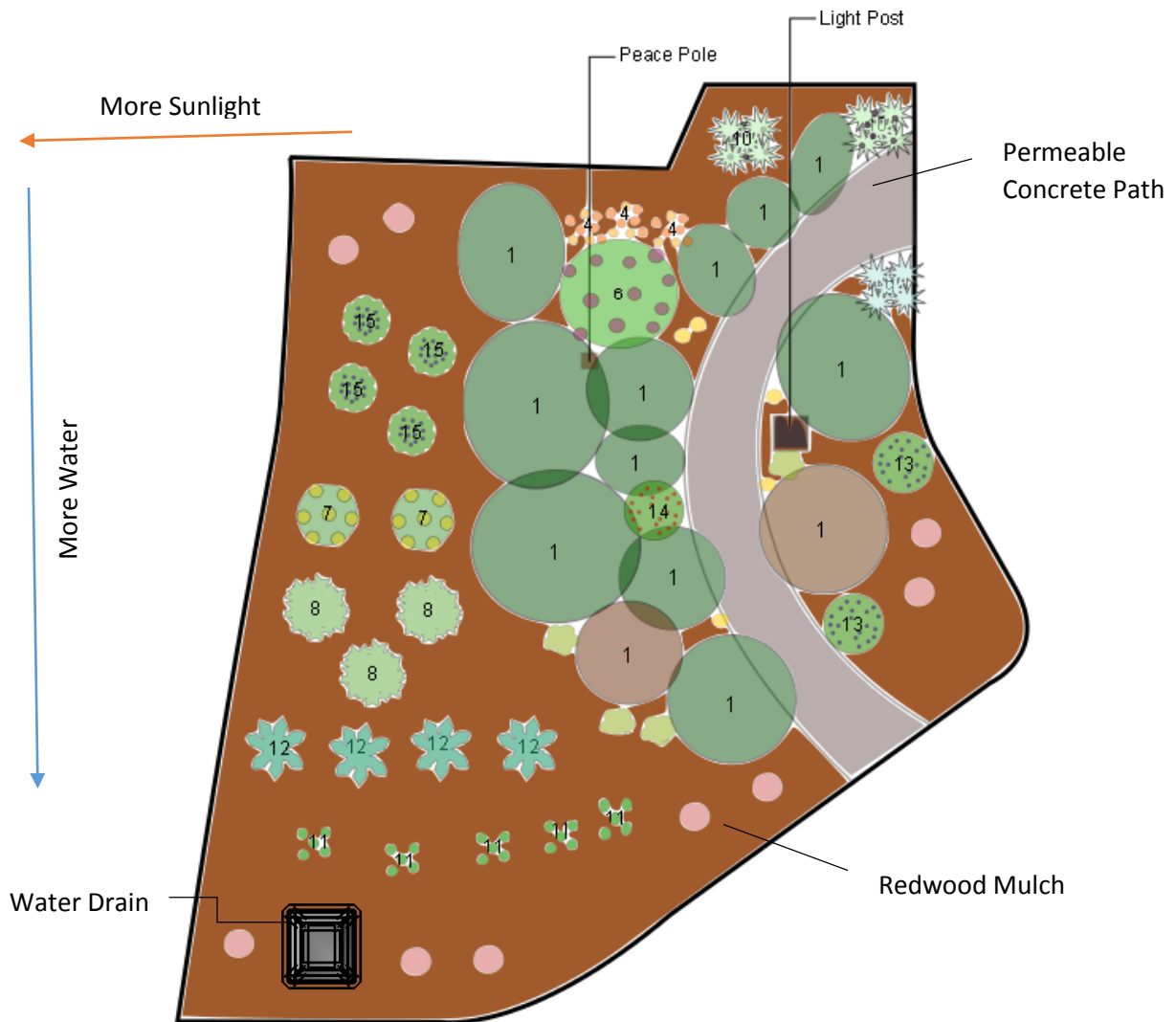


Native Xeriscap-ed Garden



Key:

- | | | | |
|---------------|------------|-------------|-------------------|
| Lilies | Mugwort | Kale | Golden Iris |
| Azaleas | White Sage | Huckleberry | Flowering Currant |
| Poppy | Chia Sage | Bearberry | |
| Monkey Flower | Strawberry | Catnip | Existing Plants |

Xeriscaping utilizes position and individual plant needs, such as water and sun intake, in order to prolong the life of each plant. This model, for example, places plants which need the most water towards the bottom left of the garden and the plants that need the least towards the top right corner because the rainwater will fall towards the bottom left corner due to the natural slope and the position of the water drain. The plants which take the most sun are located furthest away from tall existing bushes and the plants that require part shade are located near the taller bushes.