

Mar 16

~~most of the~~

exit ticket

6

25 (353) 27

pg 29

AVO

- Yesterday I finished the team survey
- I asked if someone could work on the primary logic block
- No one took it up with a problem so now I need to compensate for that Victor's been doing solid work
- I did work on the primary logic block and set up most of the visualization now so I draw

Should the logic tell us

• = done
X = req.

what lane is

full rather than

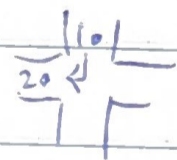
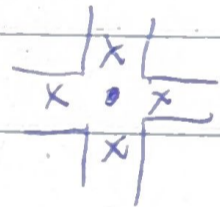
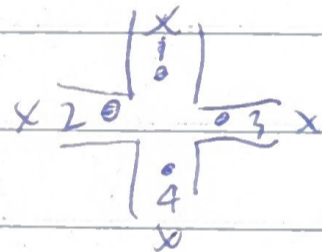
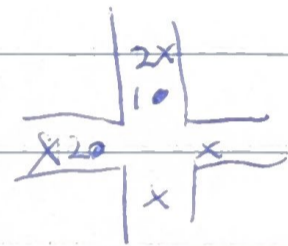
if the plan can proceed

it now feels

like we want to

solve a traffic intersection

with 4 one way lanes



try is a bit of problem now

currently all washers are a bit off time

the network might have needed to be re-distributed so this week not too sure

I also don't feel there was much new work we've not been able to reach transparency with you yet, Aswin shows up to day in chat.

We probably need to redo the primary logic based on the