



Aspen



Bergamot



Yarrow



Box Elder



Bitterroot



Cranberry



Juneberry



Dogwood



Poplar



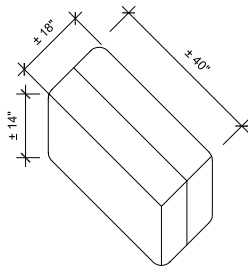
Birch

OPEN SOURCE STRAWBALE HOUSE

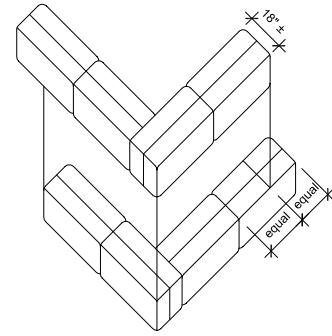
DESIGN SET COVER / LANDSCAPE

architecture for humanity

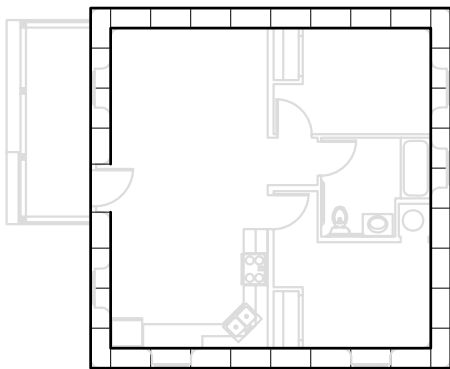




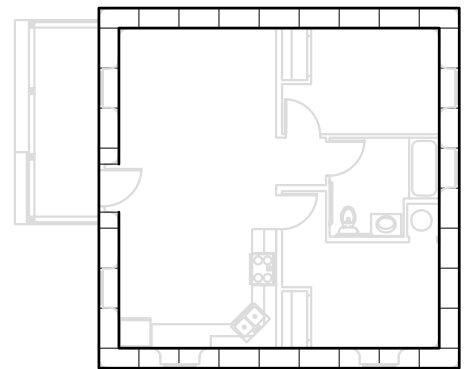
① TYPICAL 2-STRING BALE
TOTAL BALES = 357



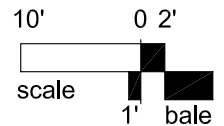
② STACKING DETAIL



④ BALE WALL PLAN
1,3,5 & 7 (ODD) COURSES
SCALE = .5x



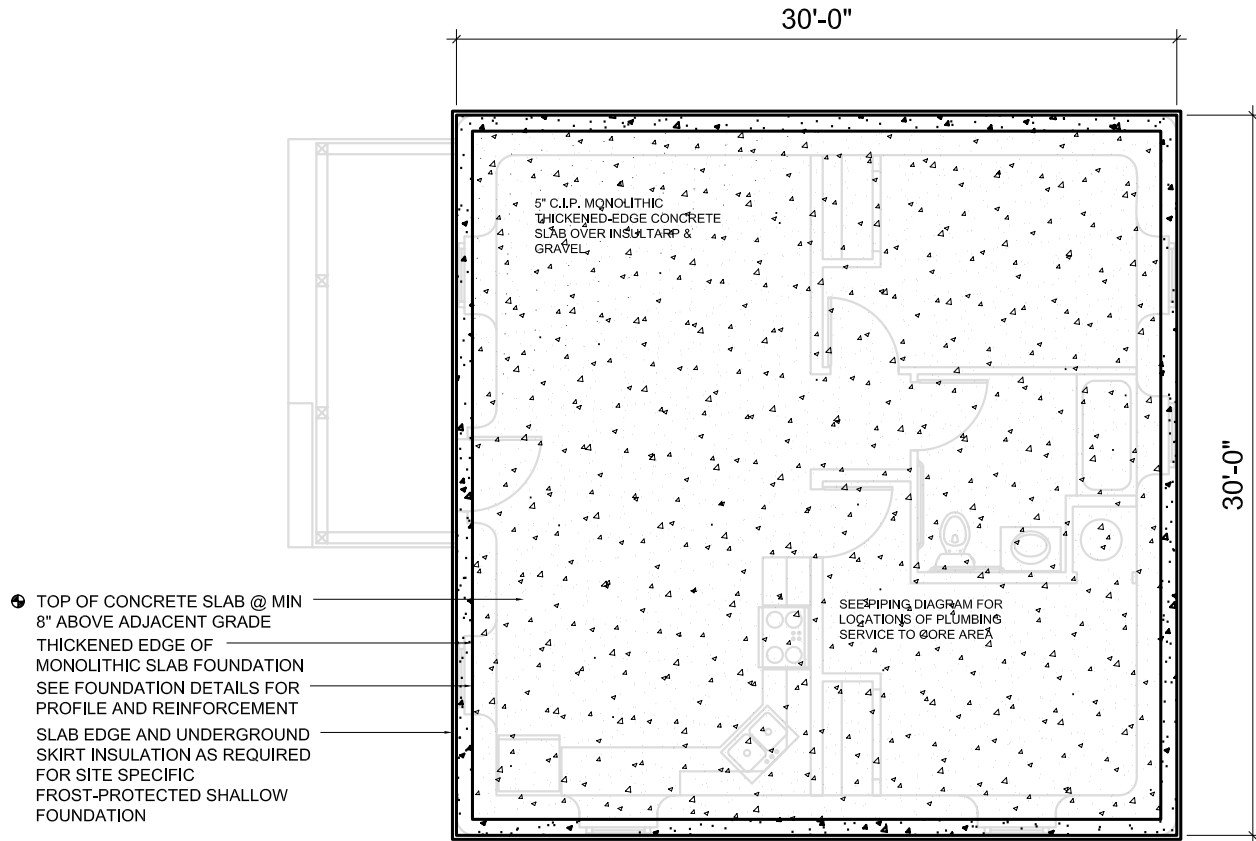
③ BALE WALL PLAN
2,4 & 6 (EVEN) COURSES
SCALE = .5x



OPEN SOURCE STRAWBALE HOUSE

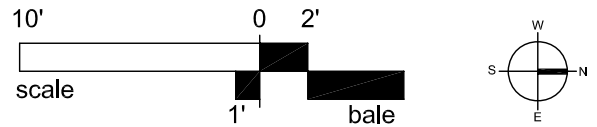
DESIGN SET | BALE SPECIFICATIONS





1 FOUNDATION PLAN

FOOTPRINT : 900 S.F.
INTERIOR : 710 S.F.



NOTES:

- 1). CONTRACTOR TO LOCATE SLEEVES FOR WATER, SEPTIC, ELECTRICAL AND TELEPHONE
- 2). CONTRACTOR TO COORDINATE ALL LAYOUT AND DIMENSIONS WITH DESIGN DRAWINGS, CONFORM TO ALL BUILDING CODES.
- 3). CONTRACTOR TO CONFIRM LOCATION, SIZE AND ELEVATION OF ALL DOOR BLOCKOUTS.
- 4). CONCRETE: FC = 3000 PSI COMPRESSIVE STRENGTH AT 28 DAYS, NORMAL WEIGHT. MAX. SLUMP = 3" FOR SLABS AND FOOTINGS, 4" FOR WALLS, COLUMNS AND BEAMS.
- 5). REINFORCING STEEL: ASTM A615 - GRADE 40 FOR #5, GRADE 60 FOR #4 AND LARGER. PROVIDE CLEAR EMBEDMENT OF REBAR AS DESIGNATED IN ACI - 318. REBAR DOWELS DESIGNATED AND SUPPLIED TO BE FIELD-BENT SHALL BE GRADE 40. REBAR SHALL BE LOCATED A MINIMUM 3" CLEAR FROM THE BOTTOM OF THE FOOTING.
- 6). WELDED WIRE FABRIC ASTM A 135 SHEETS ONLY.
- 7). FIBERMESH: ASTM C-116 TYPE III 4.1.3, 100% HOMOPOLYMER POLYPROPYLENE FIBRILLATED FIBERS - 1.5# PERCY. Y.
- 8). FORMWORK & TIES: DESIGN, ENGINEER AND CONSTRUCT FORMWORK, SHORING AND BRACING TO CONFORM TO DESIGN AND CODE REQUIREMENTS.
- 9). CONDUITS: 3" RIGID PVC CONDUIT FOR ELECTRICAL, TELEPHONE, AND CABLE AS REQUIRED.
- 10). SOILS REVIEW AND FOUNDATION BY OTHERS.

OPEN SOURCE STRAWBALE HOUSE

DESIGN SET

FLOOR PLANS



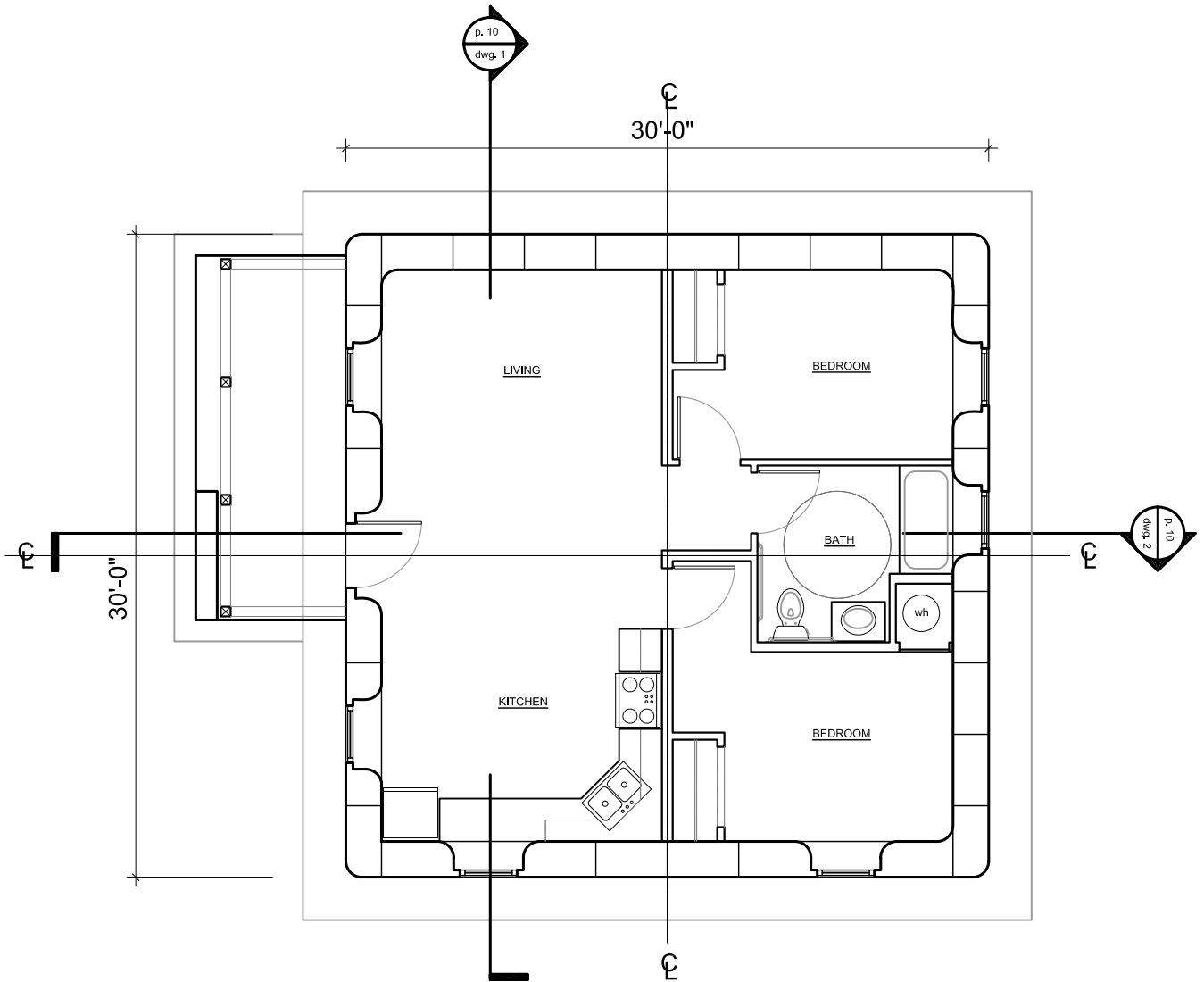
03

architecture for humanity

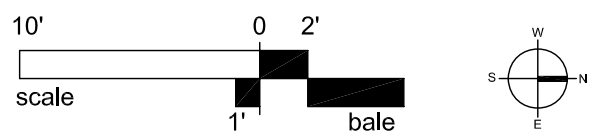
NAC
NATHANIEL CORUM
NATHANIELCORUM.ORG

FORD FOUNDATION
Strengthen democratic values, reduce poverty and injustice,
promote international cooperation and advance human achievement

Open Architecture
Network beta 0.2



1 FLOOR PLAN
 FOOTPRINT : 900 S.F.
 INTERIOR : 710 S.F.



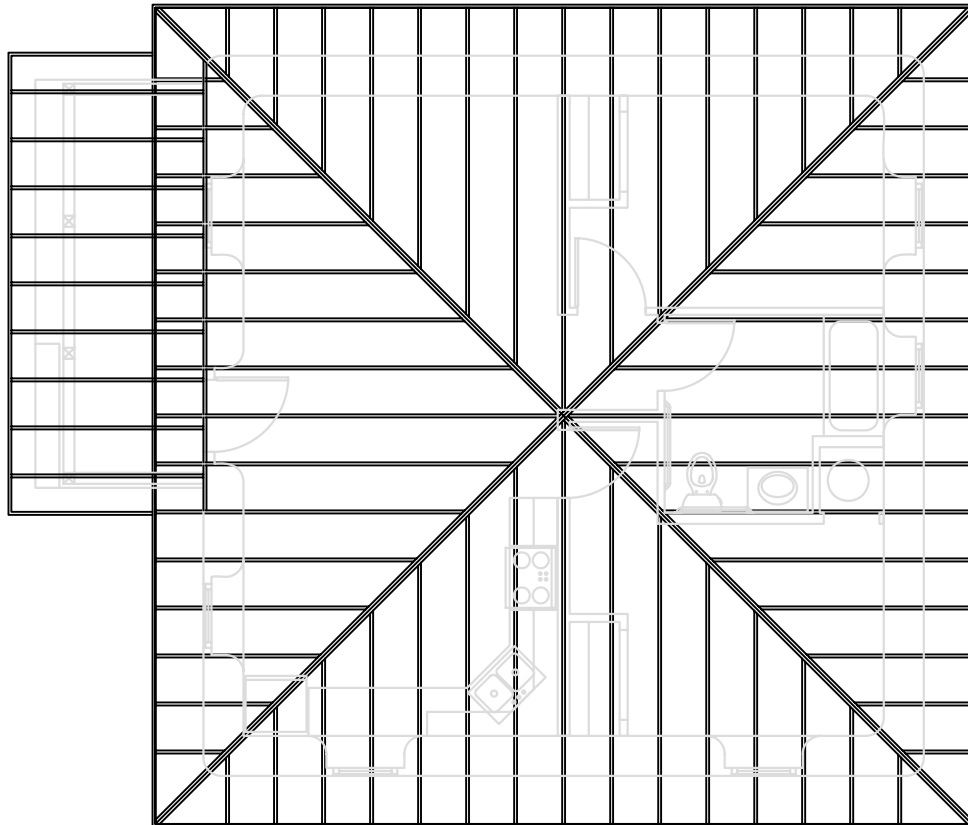
GENERAL NOTES:

- 1). ALL WORK SHALL BE PERFORMED IN ACCORDANCE WITH ALL APPLICABLE CODES, REGULATIONS, ORDINANCES AND STANDARDS HAVING JURISDICTION, INCLUDING 2003 INTERNATIONAL BUILDING CODES (IBC) AND MEET ALL ADA REQUIREMENTS.
- 2). CONTRACTOR IS RESPONSIBLE FOR CHECKING ALL CONTRACT DOCUMENTS, FIELD CONDITIONS AND DIMENSIONS FOR ACCURACY AND CONFIRMING THAT THE WORK IS BUILDABLE AS SHOWN AND MEETS ALL APPLICABLE CODES BEFORE PROCEEDING WITH CONSTRUCTION. IF THERE ARE ANY QUESTIONS REGARDING THESE OR OTHER COORDINATION ISSUES, THE CONTRACTOR IS RESPONSIBLE FOR OBTAINING A CLARIFICATION BEFORE PROCEEDING WITH THE WORK IN QUESTION OR RELATED WORK.
- 3). THE CONTRACTOR SHALL CERTIFY SIZE AND LOCATION OF ALL REQUIRED OPENINGS FOR STRUCTURAL, MECHANICAL, ELECTRICAL AND PLUMBING WORK AND EQUIPMENT WITH TRADES INVOLVED.
- 4). WRITTEN DIMENSIONS SHALL HAVE PRECEDENCE OVER SCALED DIMENSIONS.
- 5). ALL DIMENSIONS TO FACE OF FRAMING UNLESS NOTED OTHERWISE.
- 6). REQUIREMENT FOR "SHOP DRAWING" ON ANY ITEM SHALL INCLUDE AN ENGINEERED SHOP DRAWING SUBMITTAL TO BE PROVIDED TO THE CONTRACTOR FOR REVIEW AND APPROVAL. CONTRACTOR IS RESPONSIBLE FOR ALL REVIEWS AND FINAL APPROVALS.

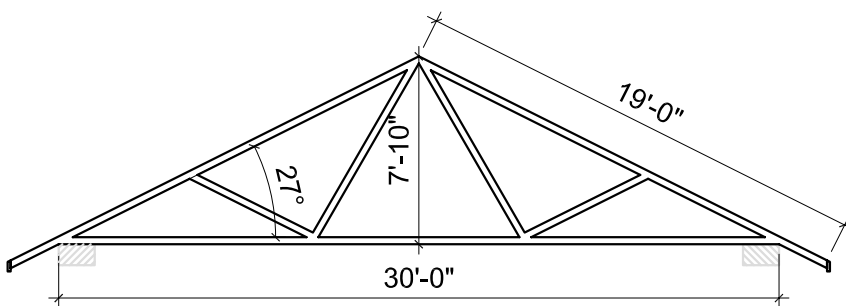
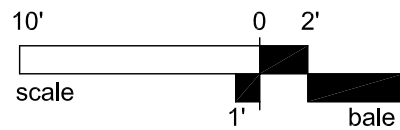
OPEN SOURCE STRAWBALE HOUSE

DESIGN SET FLOOR PLANS





① **ROOF FRAMING PLAN**
 CONVENTIONALLY-FRAMED
 PYRAMID STRUCTURAL
 BY OTHERS



TRUSS TYPE A

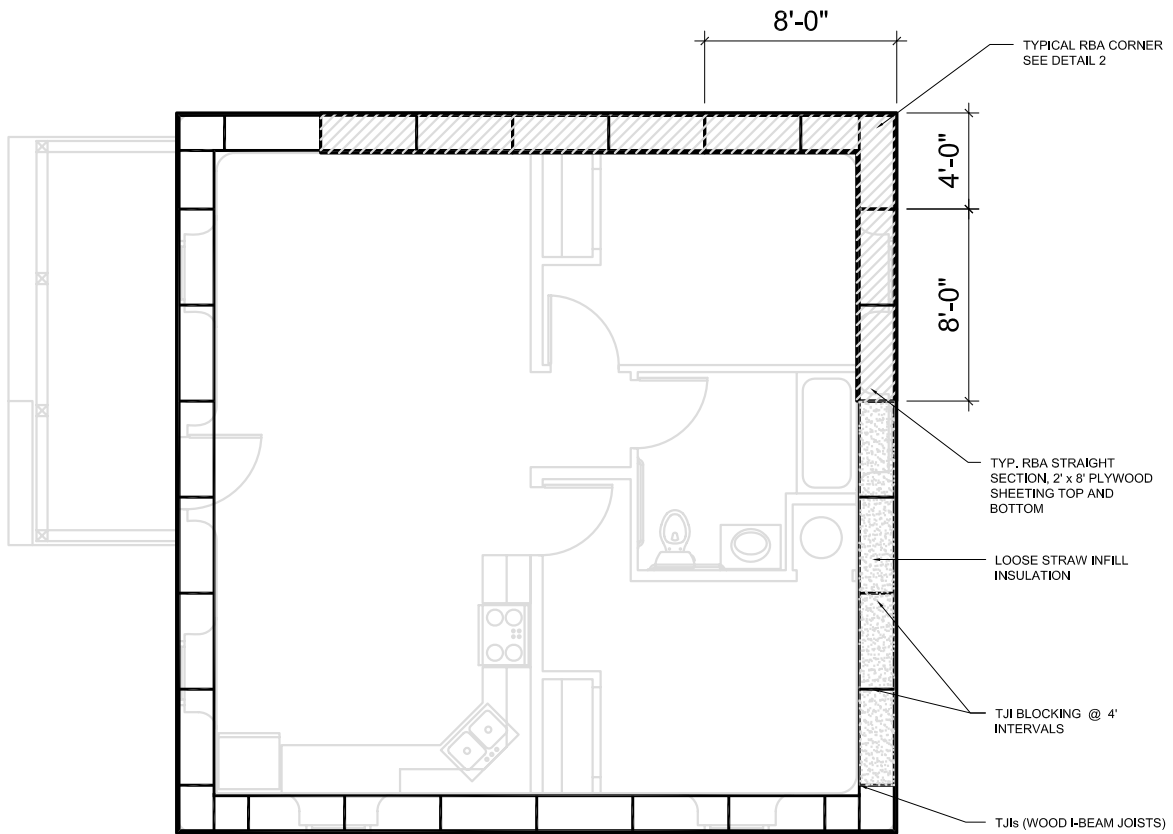
② **ALTERNATE: GABLE ROOF / PREFAB TRUSSES**

OPEN SOURCE STRAWBALE HOUSE

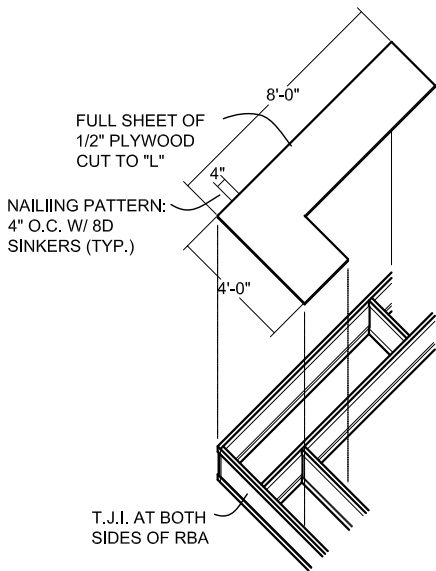
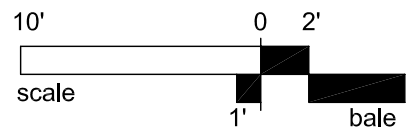
DESIGN SET ROOF FRAMING PLAN



05



① RBA PLAN
INCLUDING SHEETING AND BLOCKING



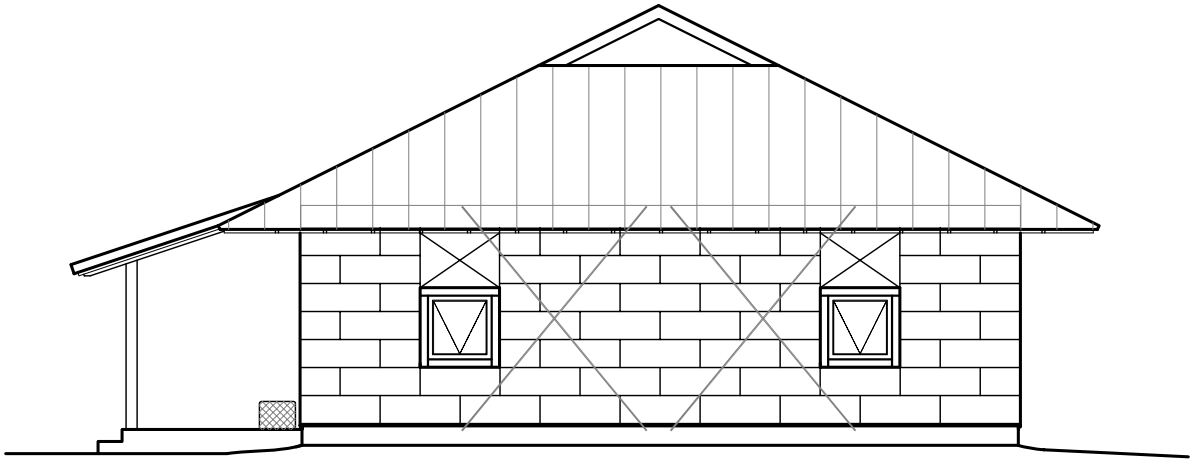
② RBA ASSEMBLY

OPEN SOURCE STRAWBALE HOUSE

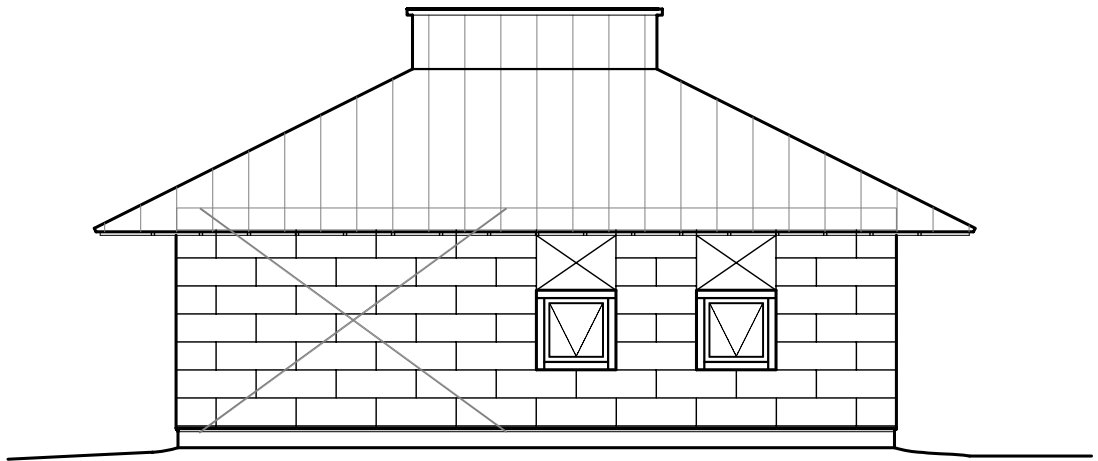
DESIGN SET | ROOF BEARING ASSEMBLY



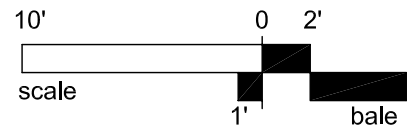
06



① EAST ELEVATION



② NORTH ELEVATION



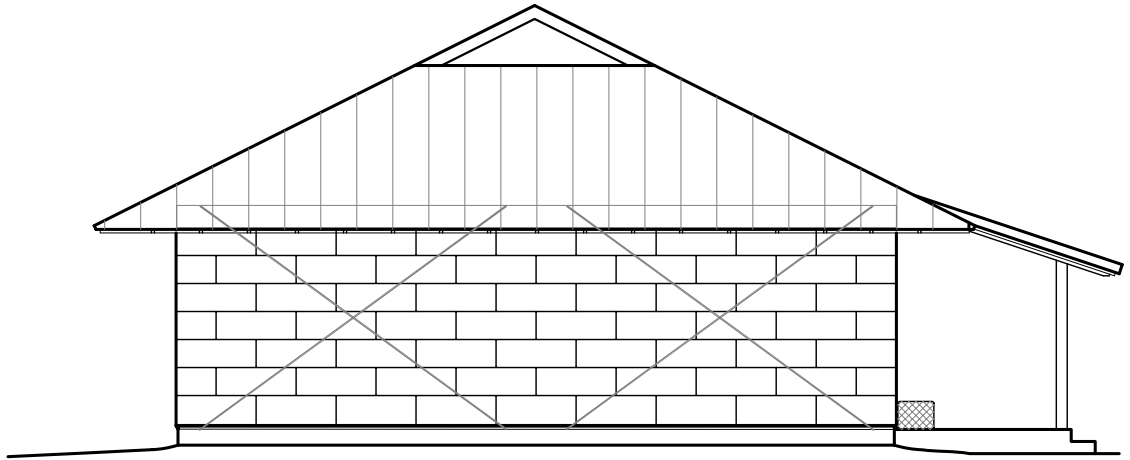
OPEN SOURCE STRAWBALE HOUSE

DESIGN SET BALE ELEVATIONS: P1

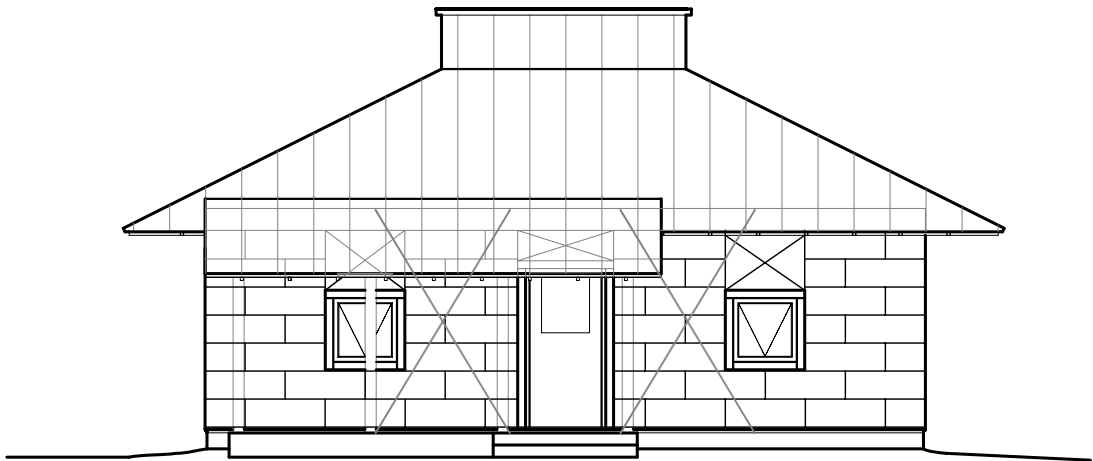


architecture for humanity

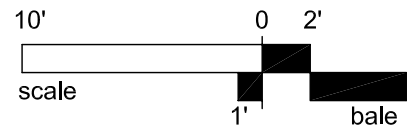




③ WEST ELEVATION



④ SOUTH ELEVATION



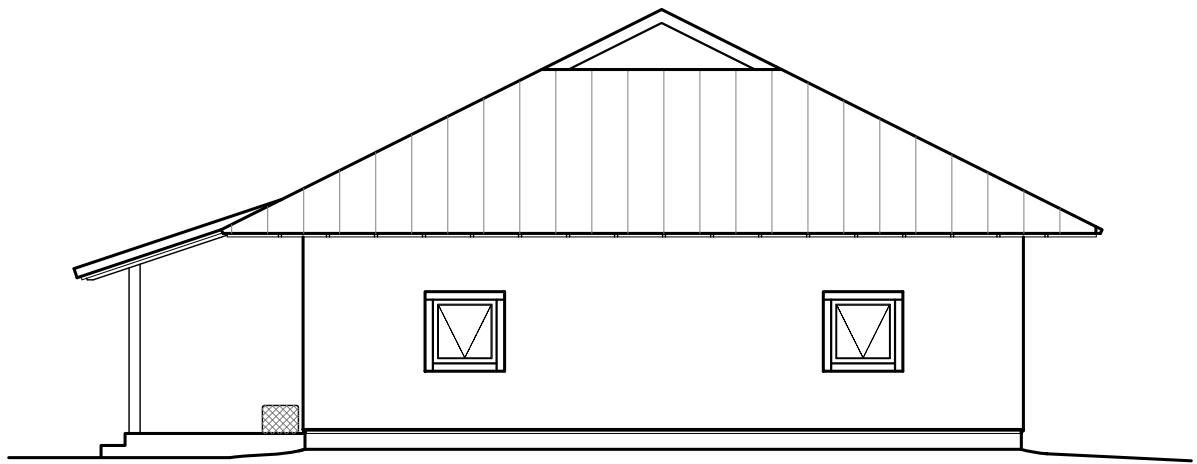
OPEN SOURCE STRAWBALE HOUSE

DESIGN SET BALE ELEVATIONS: P2

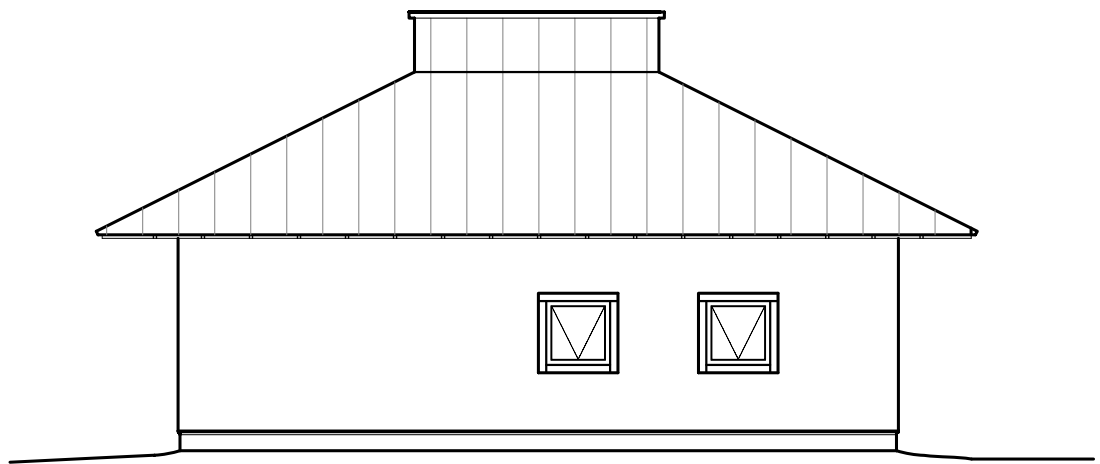


architecture for humanity

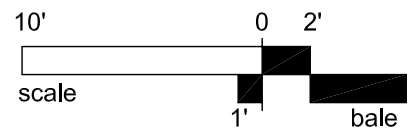




① EAST ELEVATION



② NORTH ELEVATION



OPEN SOURCE STRAWBALE HOUSE

DESIGN SET | EXTERIOR ELEVATIONS: P1



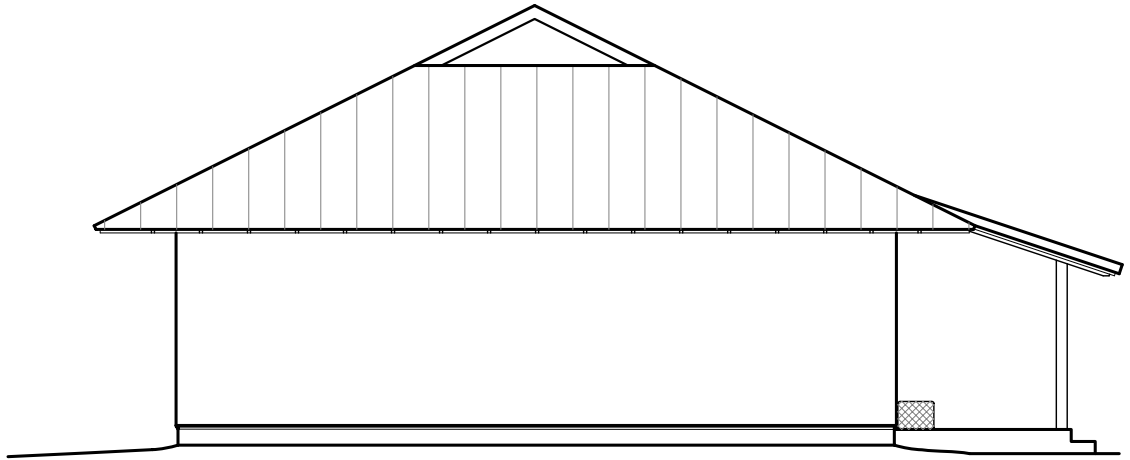
09

architecture for humanity

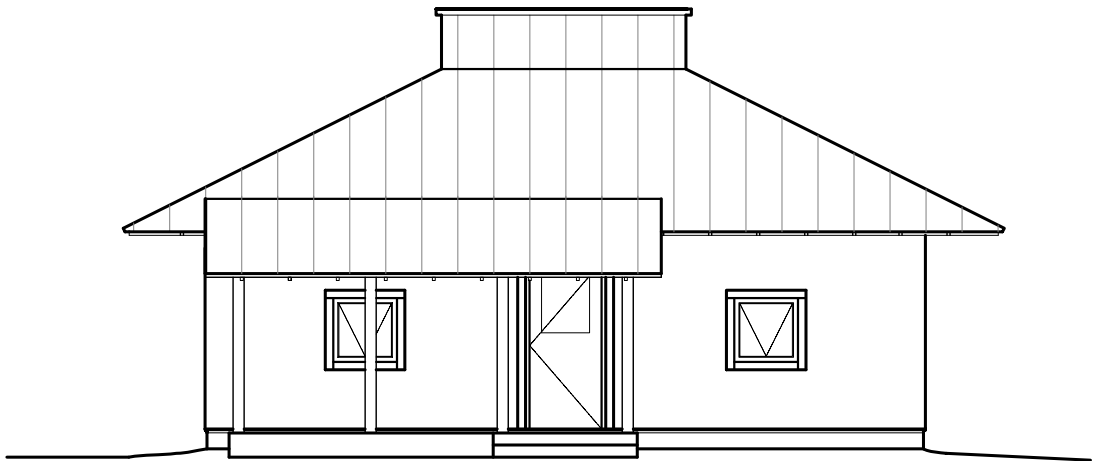


FORD FOUNDATION
Strengthen democratic values, reduce poverty and injustice,
promote international cooperation and advance human achievement

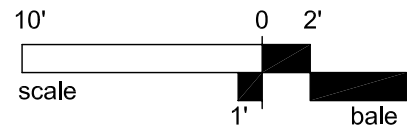
Open Architecture Network beta 0.2



③ WEST ELEVATION



④ SOUTH ELEVATION



OPEN SOURCE STRAWBALE HOUSE

DESIGN SET | EXTERIOR ELEVATIONS: P2

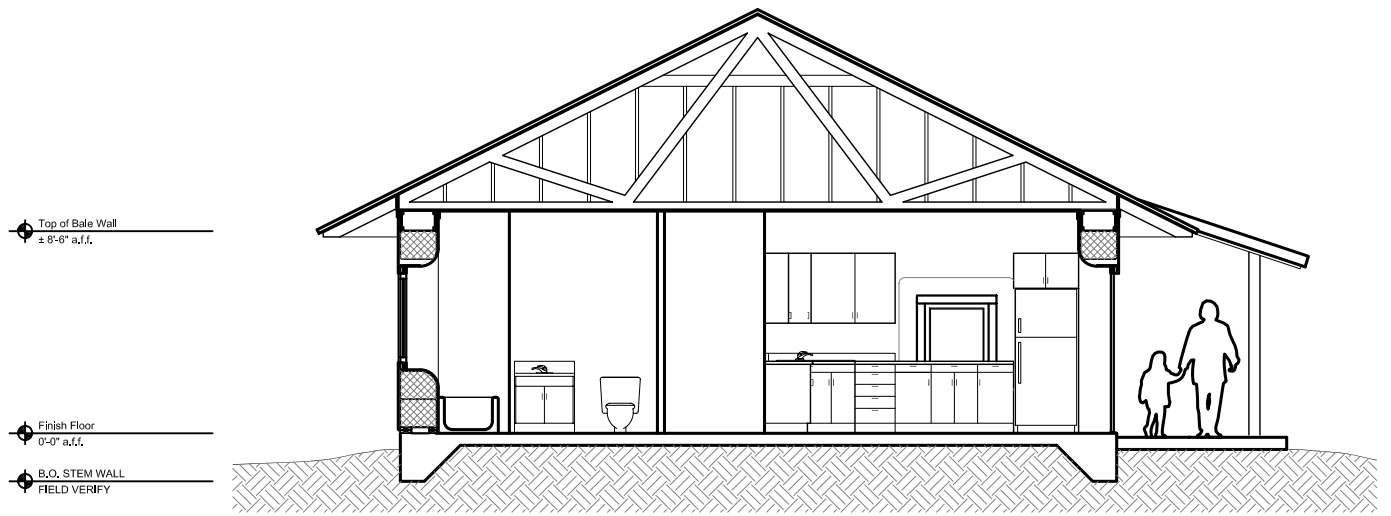


architecture for humanity

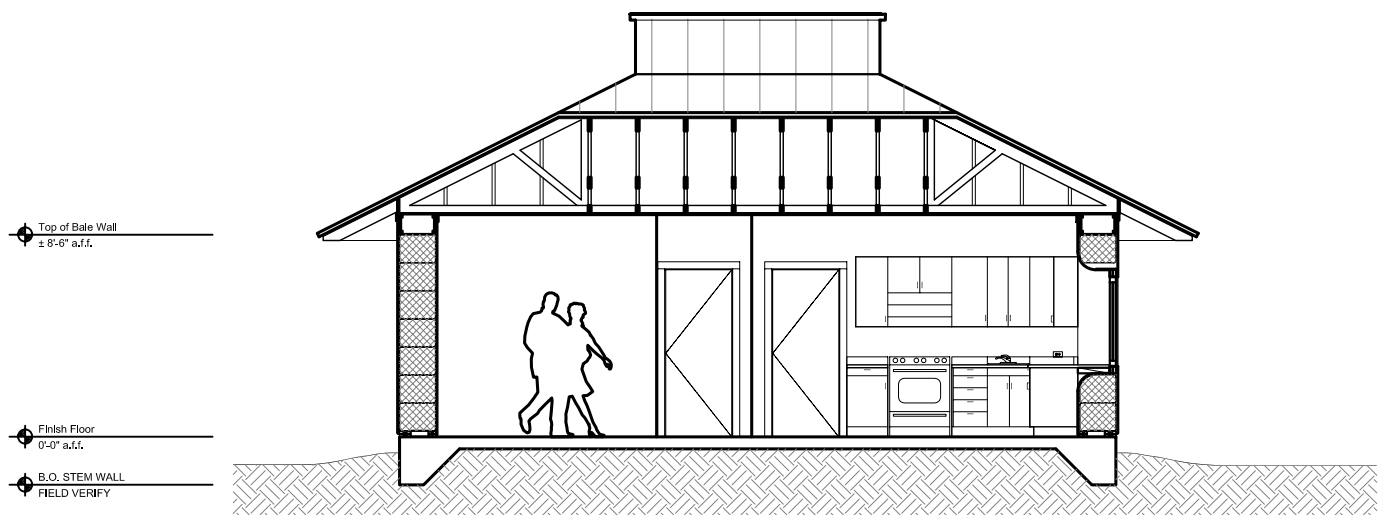


FORD FOUNDATION
Strengthen democratic values, reduce poverty and injustice,
promote international cooperation and advance human achievement

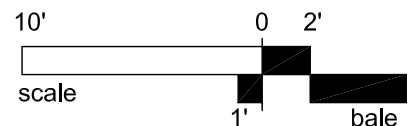
Open Architecture Network beta 0.2



1 SECTION LOOKING WEST



2 SECTION LOOKING SOUTH

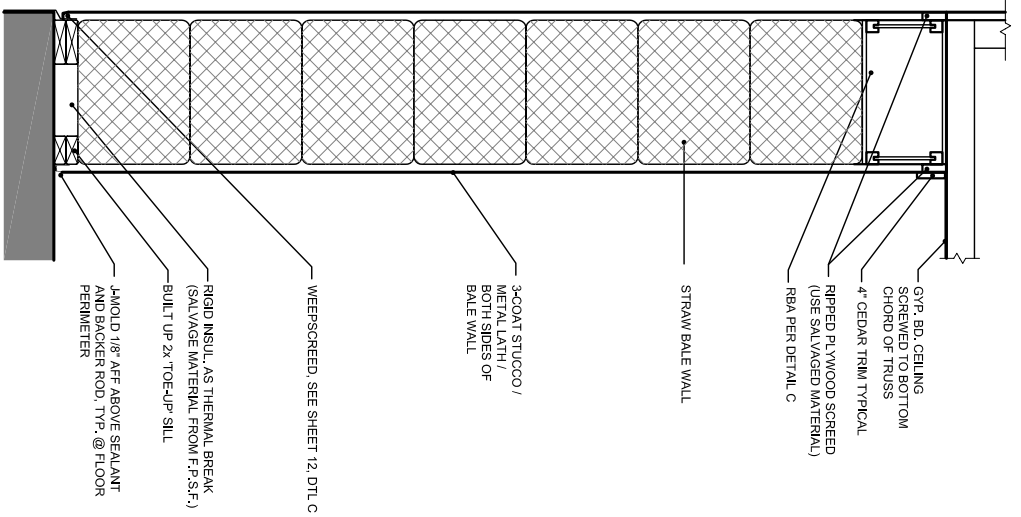


OPEN SOURCE STRAWBALE HOUSE

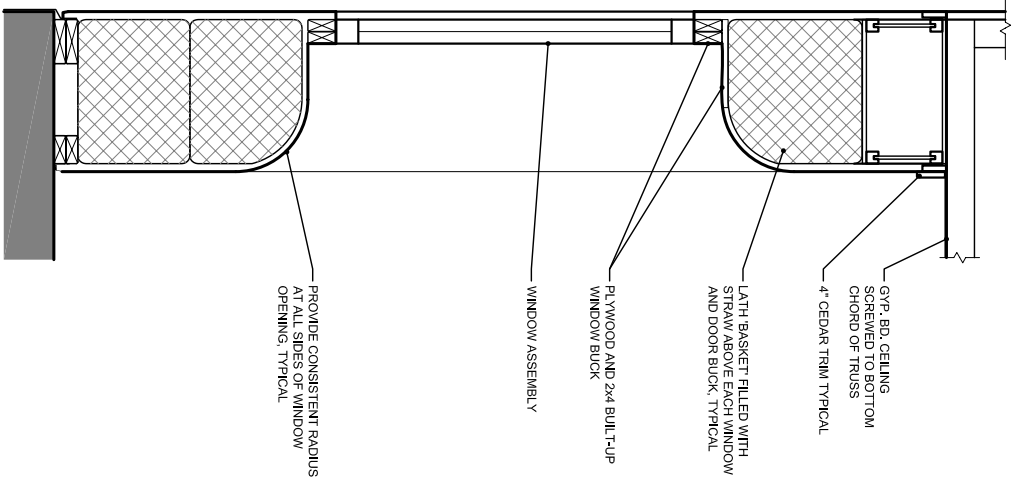
DESIGN SET INTERIOR ELEVATIONS



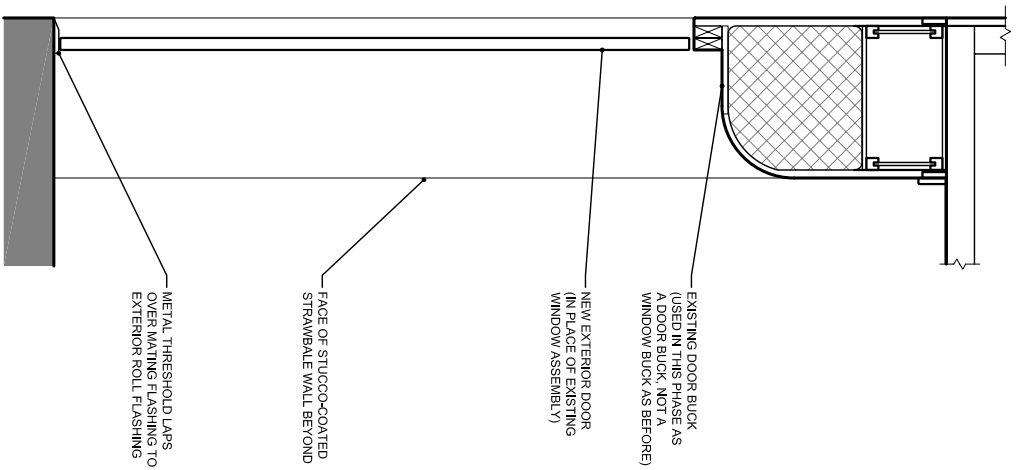
11



@WALL-TYP.



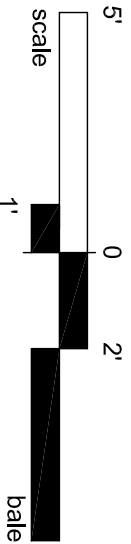
@WINDOW

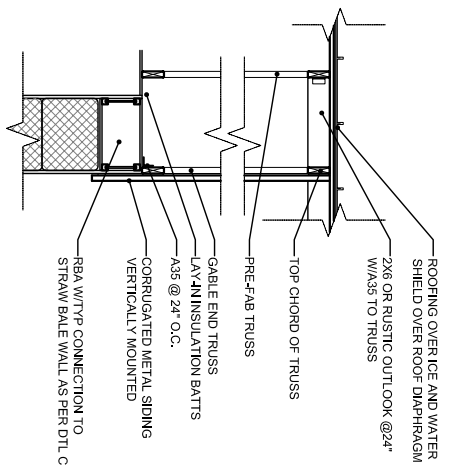
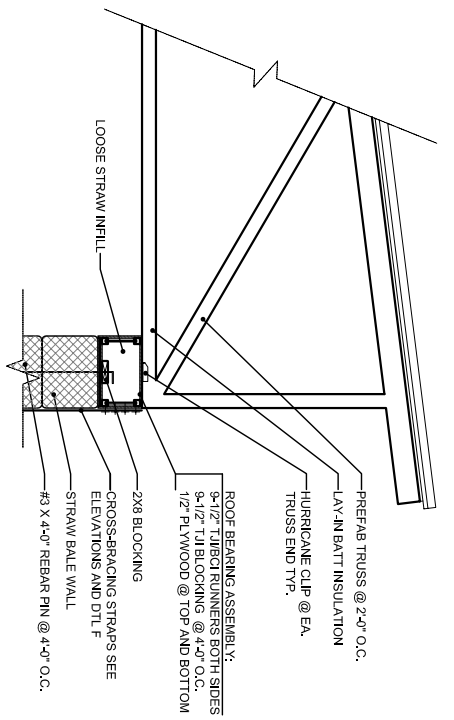


@DOOR

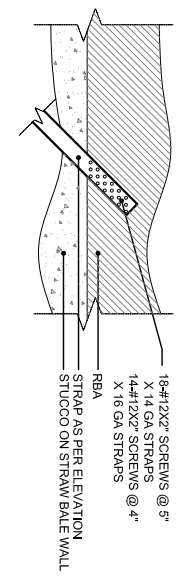
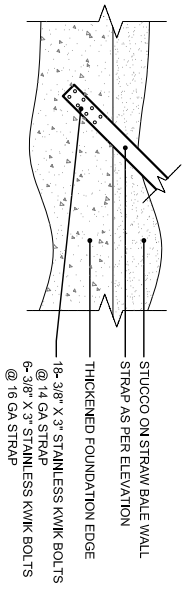
1 BALE WALL SECTIONS

SCALE = 4X

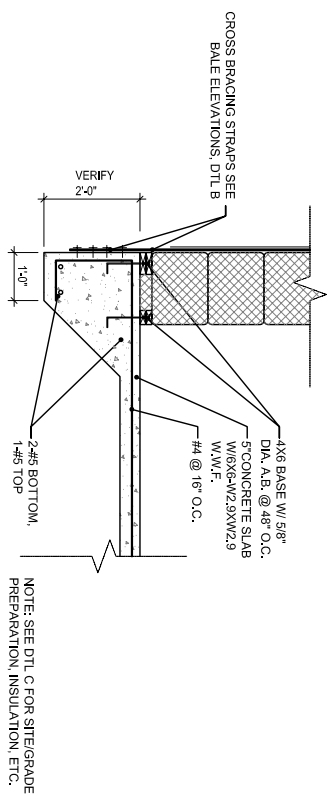
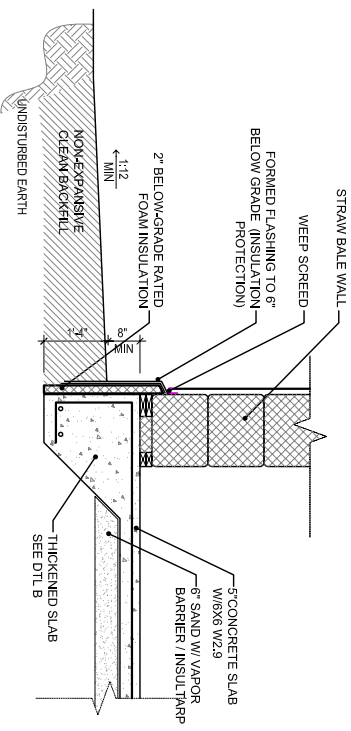




A ROOF / WALL CONNECTIONS
SCALE = 2X



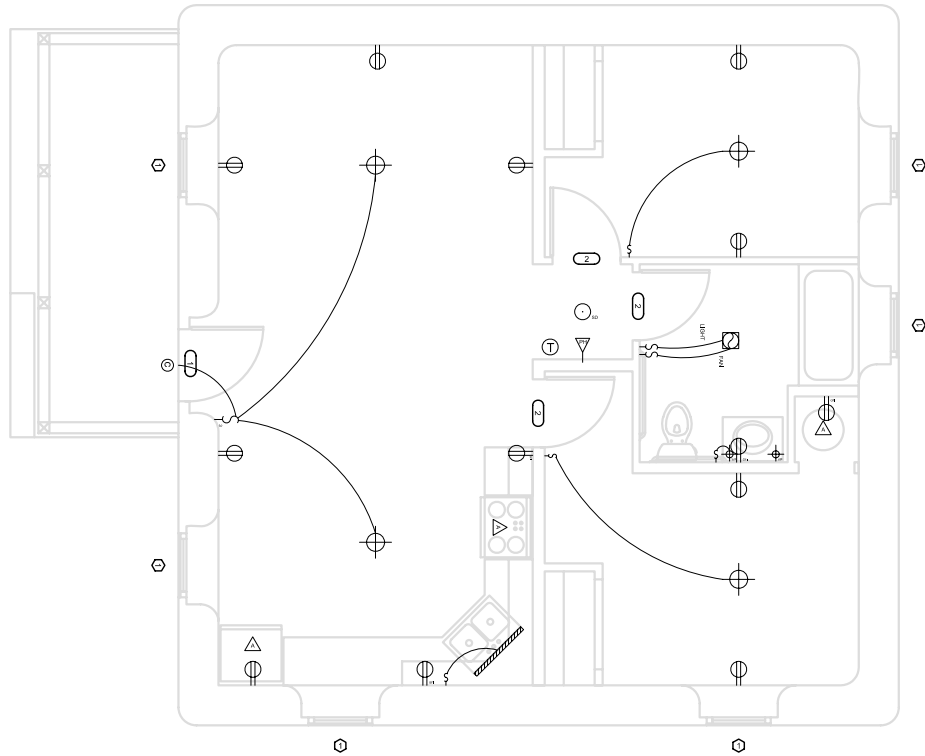
B COIL STRAP CONNECTIONS
SCALE = 2X



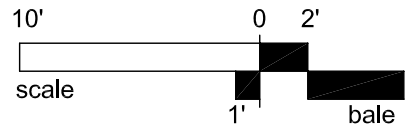
C FOUNDATION DETAIL
SCALE = 2X

D FOUNDATION CONNECTION
SCALE = 2X





1 ELECTRICAL PLAN



PLAN KEY:

SYMBOL	NAME
⊙	WINDOW ID
⊔	DOOR ID
△	APPLIANCE
⊖	DUPLEX OUTLET
⊖⊖	GFI OUTLET
⊖⊖	EXTERIOR DUPLEX OUTLET

SYMBOL	NAME
⊙	CEILING FAN
⊙	CEILING FAN W/ LIGHT
⊙	LARGE PENDANT
⊙	SMALL PENDANT
⊙	PHONE JACK
⊙	SMOKE DETECTOR

SYMBOL	NAME
⌚	SWITCH
⌚⌚	DOUBLE SWITCH
⌚⌚⌚	TRIPLE SWITCH
⊖	THERMOSTAT
⊙	WALL PENDANT

OPEN SOURCE STRAWBALE HOUSE

DESIGN SET ELECTRICAL PLAN



E 1